

MONTHLY MEMBERSHIP PROGRESS REPORT

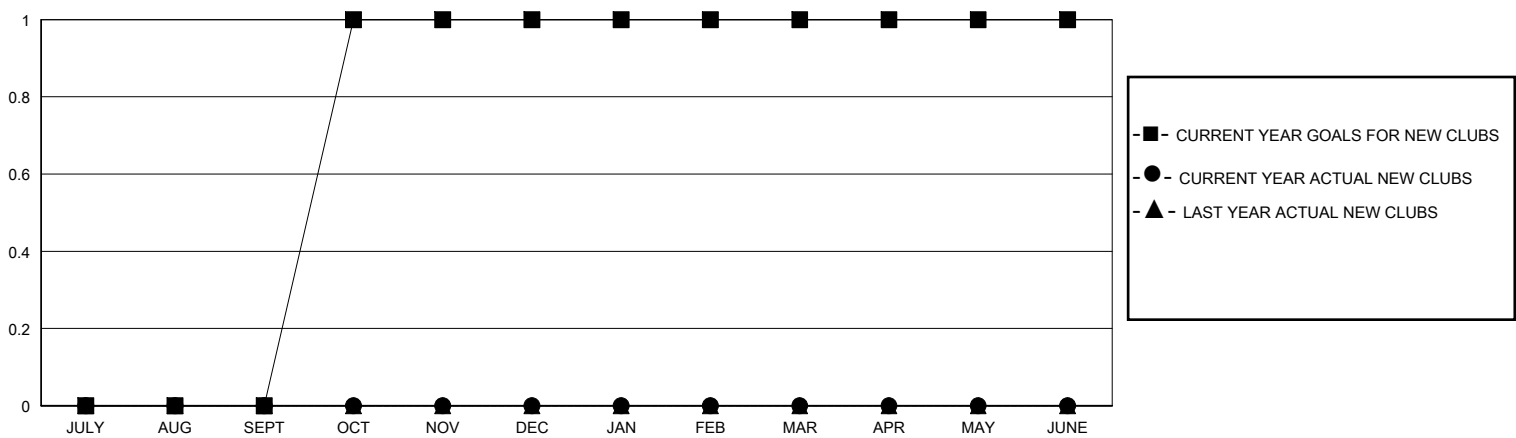
District 5 SKS

Results as of: 11/30/2025

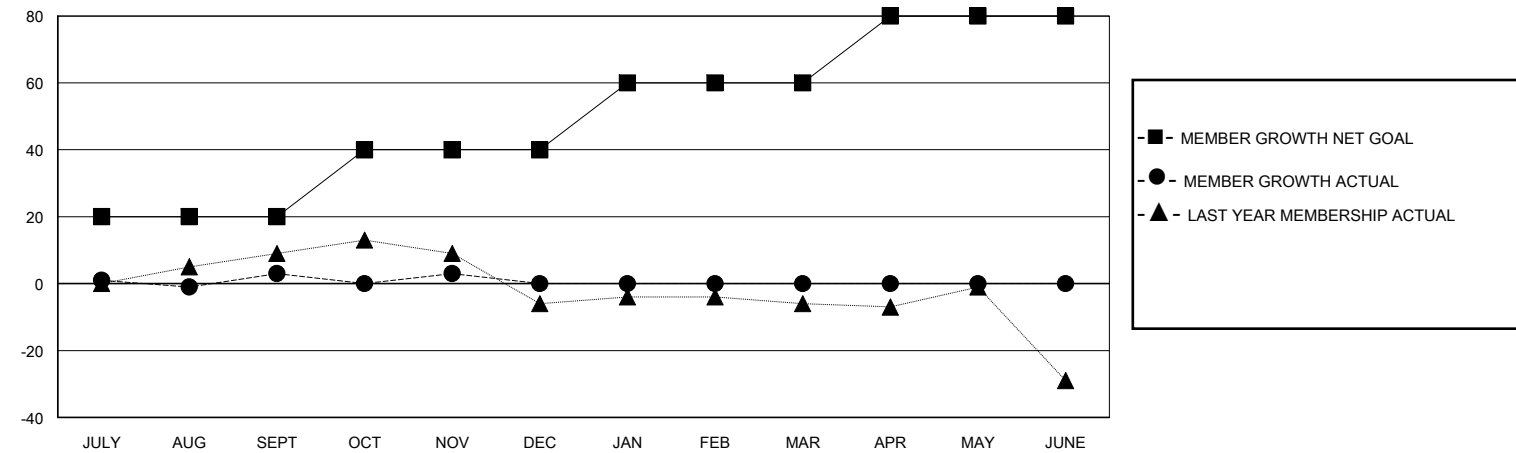
GMT: LOCATION CANADA GMT CA

Clubs				Members			
RESULTS FOR 2025-2026				RESULTS FOR 2025-2026			
QUARTER	NEW CLUB GOAL	NEW CLUBS	DROPPED CLUBS	QUARTER	MEMBER GROWTH NET GOAL	MEMBER GROWTH ACTUAL	DROPPED MEMBERS ACTUAL (including transfers)
JULY/AUG/SEPT	0	0	0	JULY/AUG/SEPT	20	13	10
OCT/NOV/DEC	1	0	0	OCT/NOV/DEC	20	27	26
JAN/FEB/MAR	0	0	0	JAN/FEB/MAR	20	0	0
APR/MAY/JUNE	0	0	0	APR/MAY/JUNE	20	0	0

GOALS AND ACTUAL NEW CLUBS CUMULATIVE



GOALS AND ACTUAL MEMBERS CUMULATIVE



DROPPED CLUBS: 0	18 CLUBS OF 71 ADDED 1 OR MORE NEW MEMBERS	<u>GENDER DISTRIBUTION</u> MALE 950 (70.68%) FEMALE 394 (29.32%)
<u>DROPPED MEMBERS</u> DECEASED 4 CLUB CANCELLED 0 OTHER 32 TOTAL 36	<a href="#">CLICK HERE FOR CUMULATIVE MEMBERSHIP DATA</a>	TOTAL FAMILY UNIT MEMBERS 191 FAMILY MEMBERS PAYING HALF DUES 98